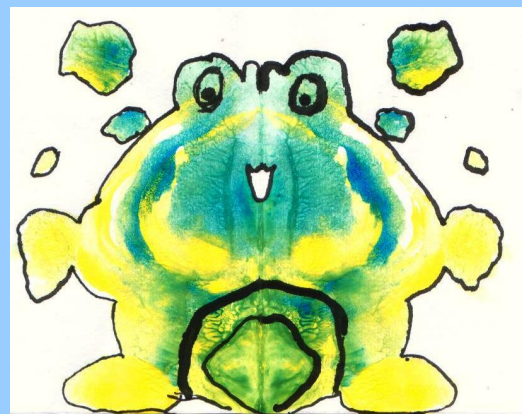
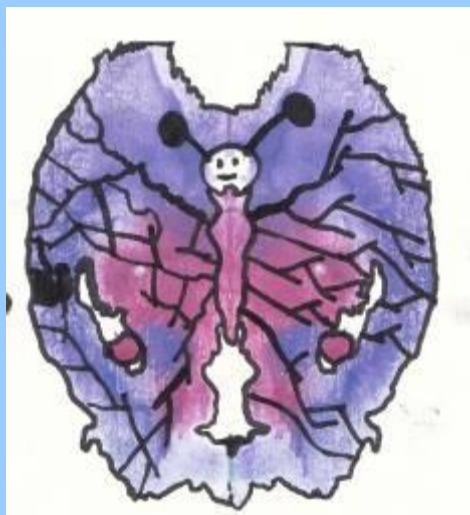


MONOTIPIJA S ČRTNO RISBO



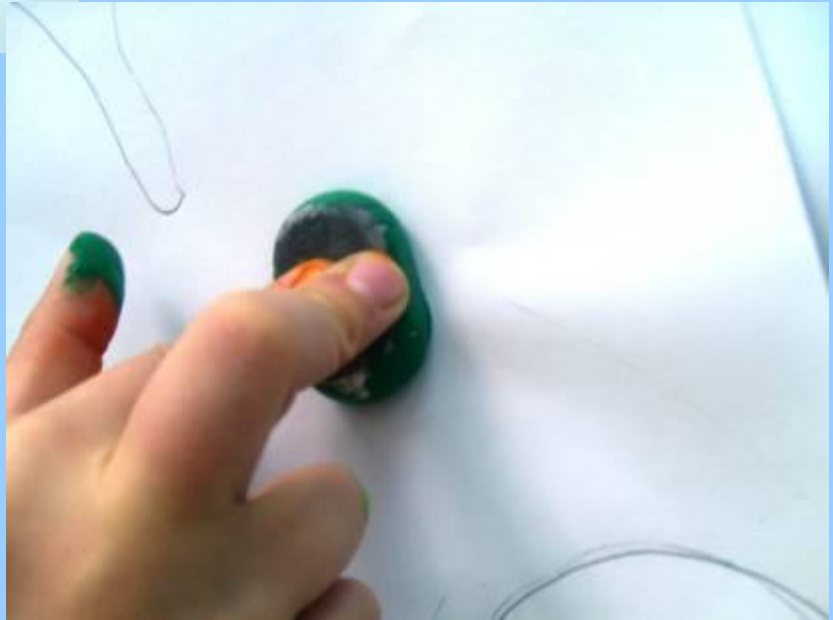


OBRIS



ODTIS



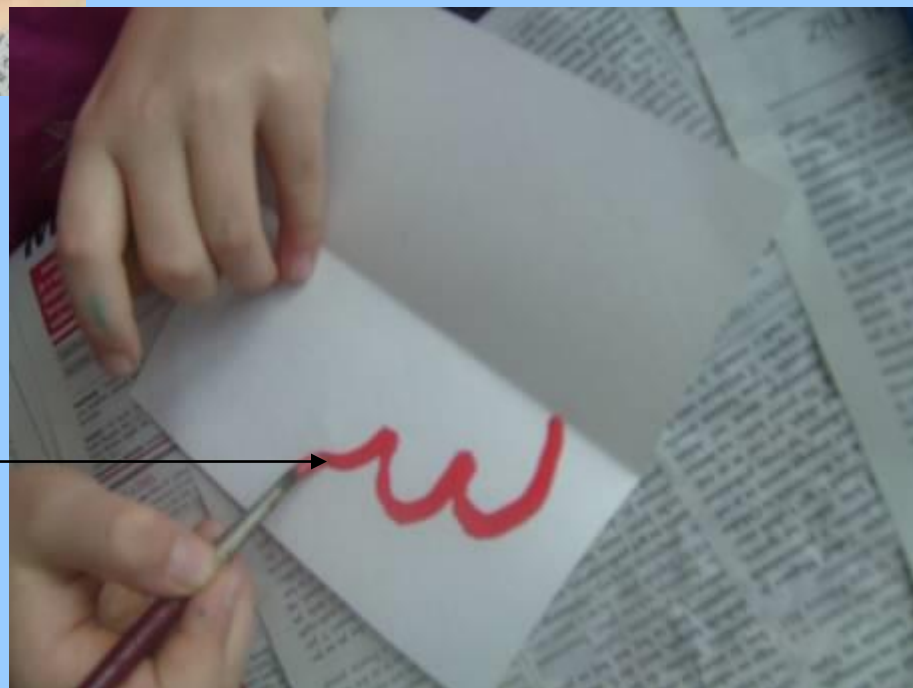
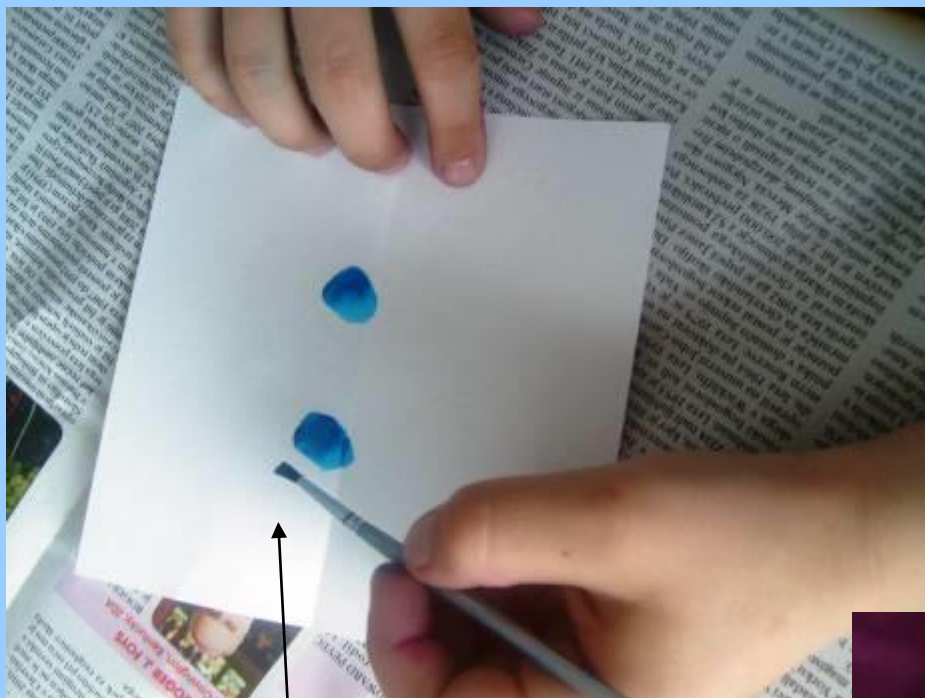






PAPIR SIMETRIČNE
OBLIKE PREPOGNEMO
PO SIMETRALI



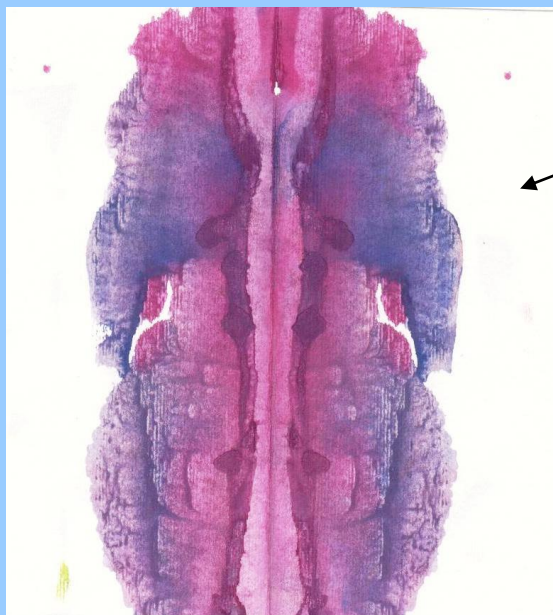


BARVE NANAŠAMO SAMO
NA POLOVICO
PREPOGNJENEGA LISTA

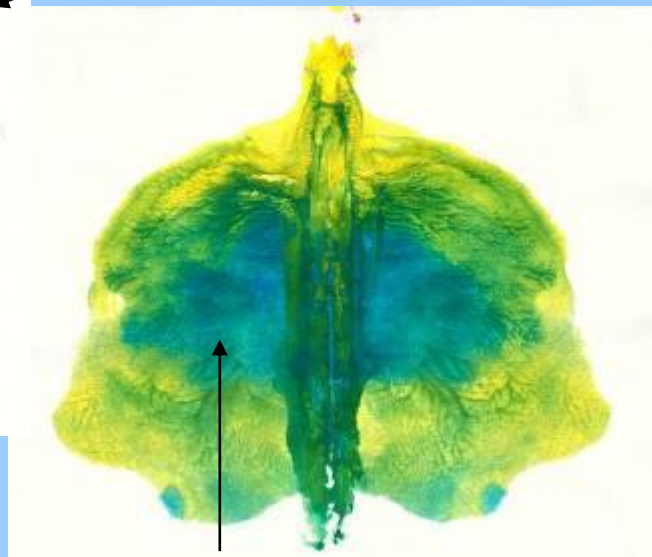
NAENKRAT NANAŠAMO NAJVEČ TRI BARVE



RDEČA IN RUMENA

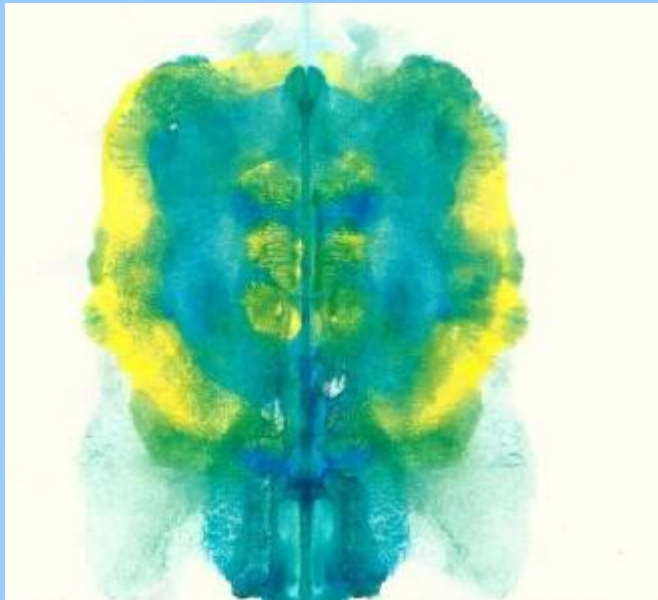
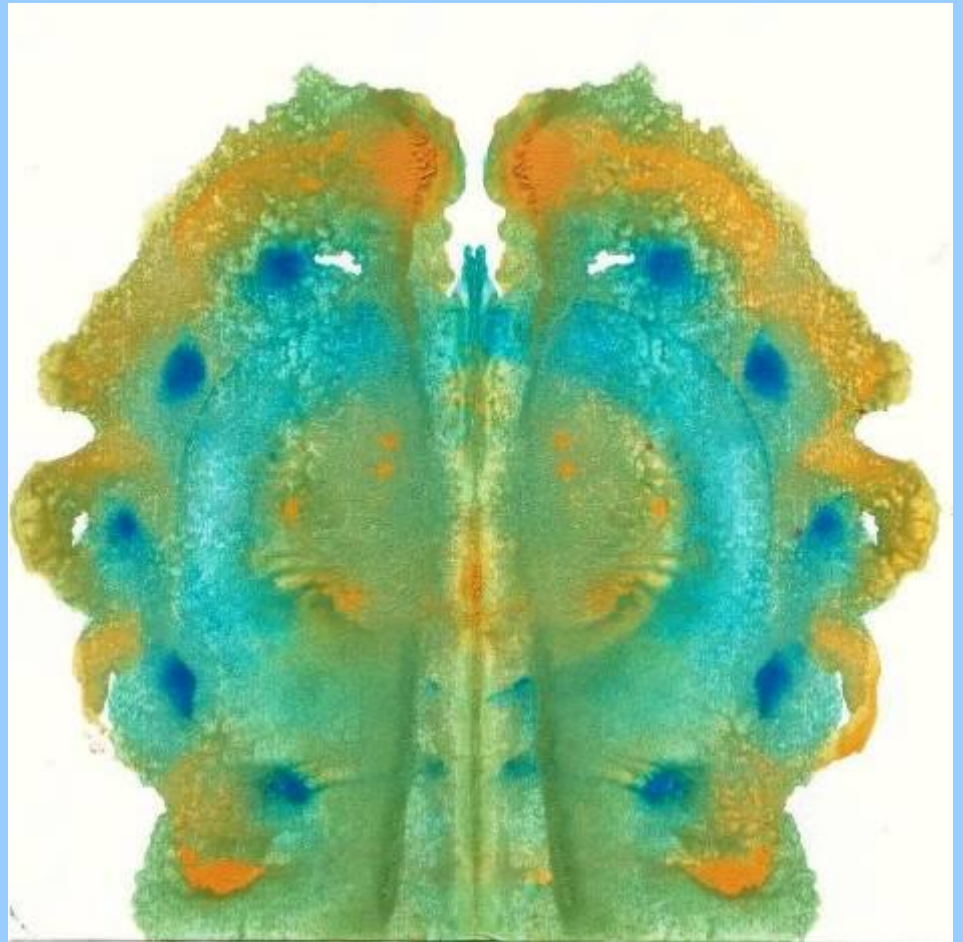
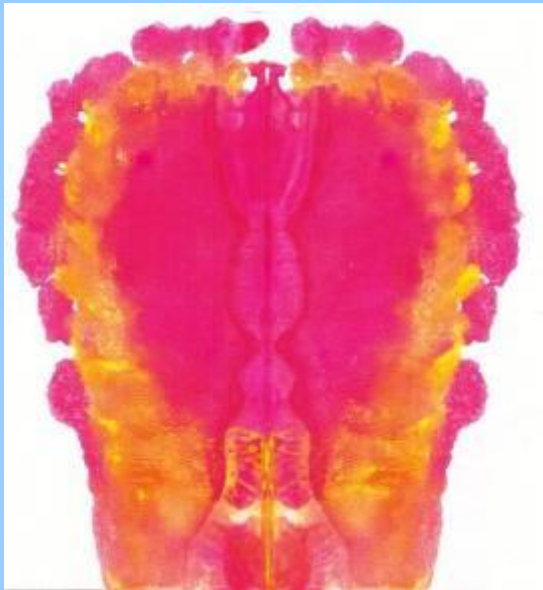


MODRA IN RDEČA



MODRA IN RUMENA

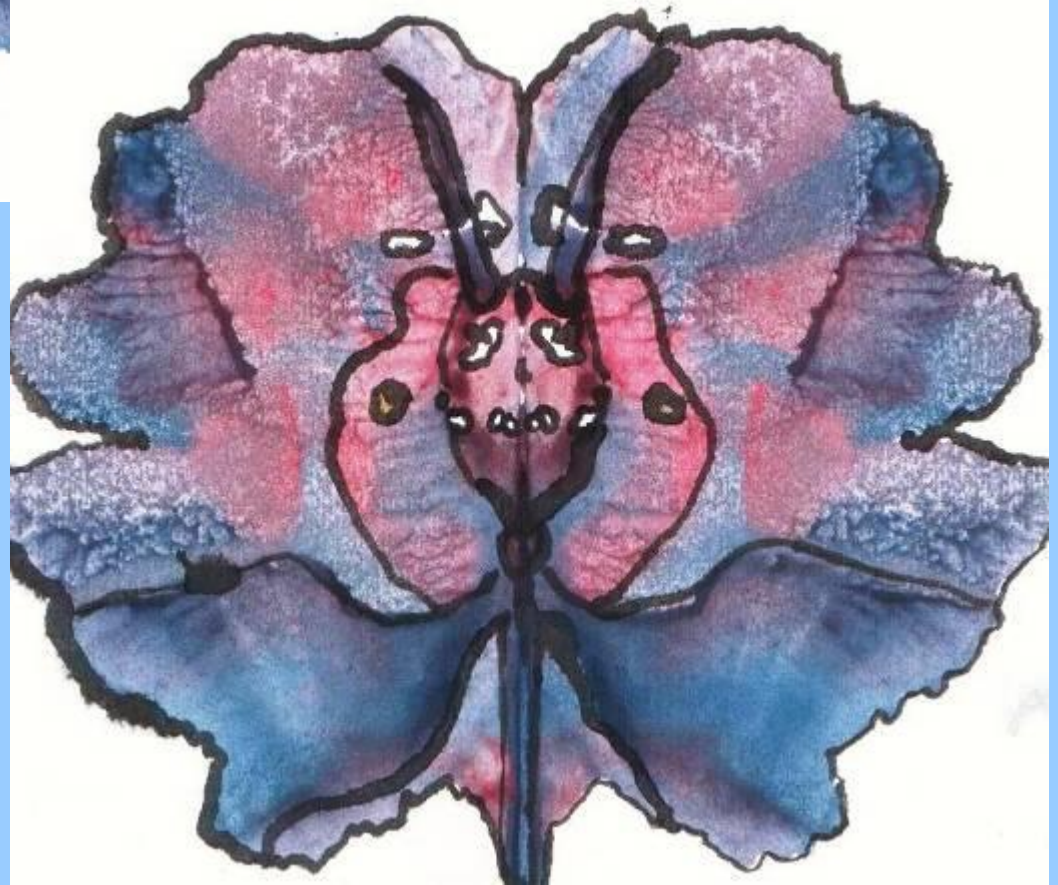
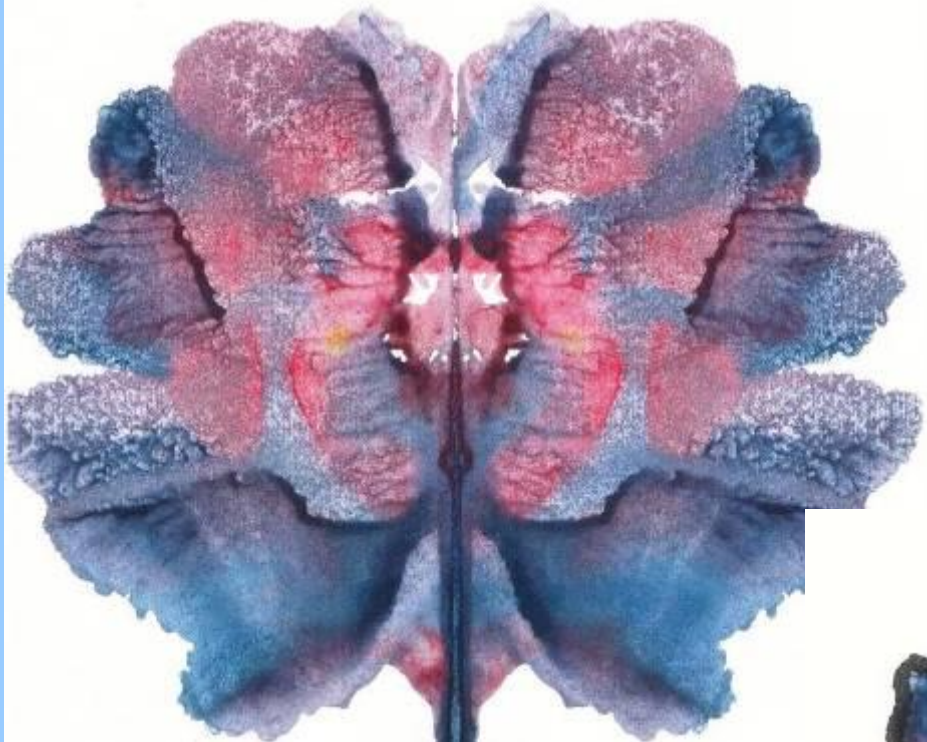






S ČRNIM TUŠEM IN PERESOM (UPORABIMO LAHKO TUDI ČRN FLOMASTER) RIŠEMO DOMIŠLJIJSKE PODOBE.

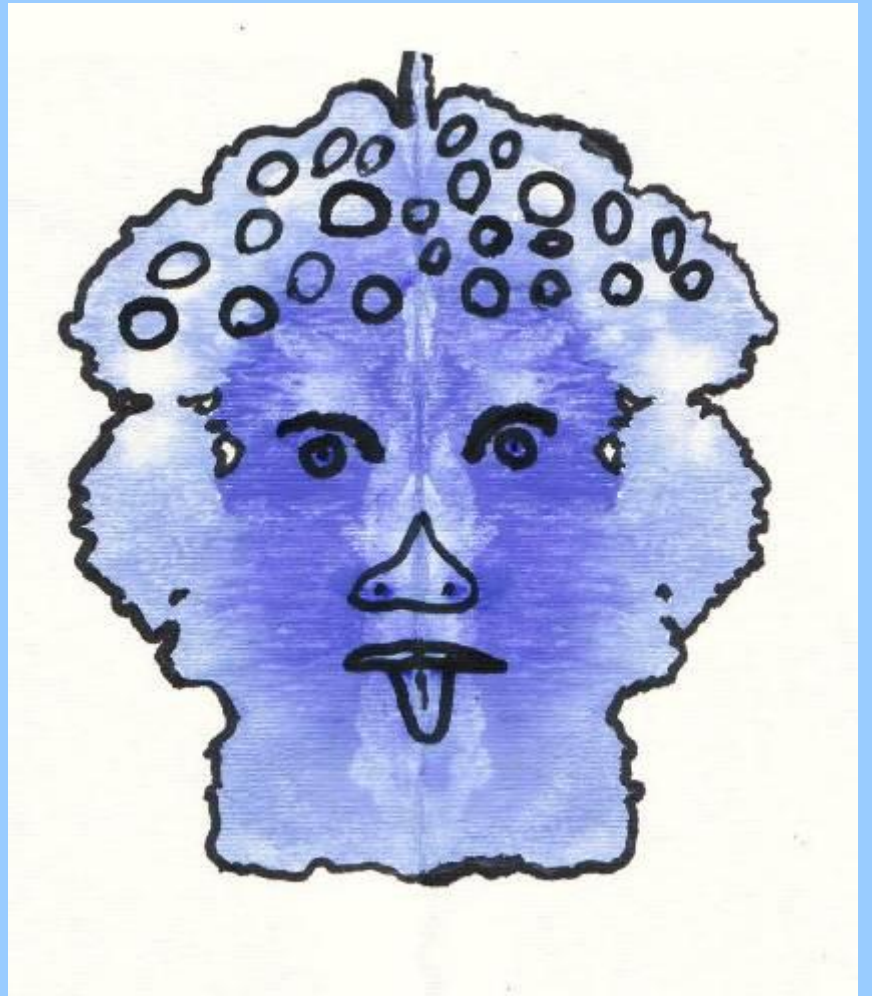
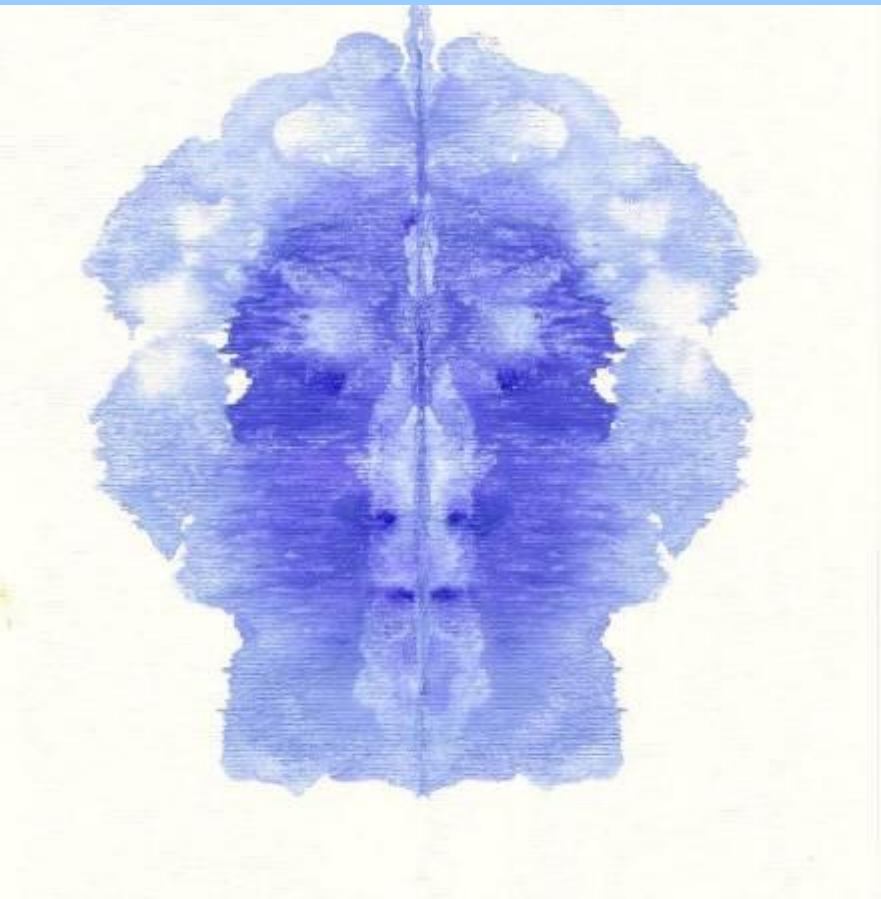


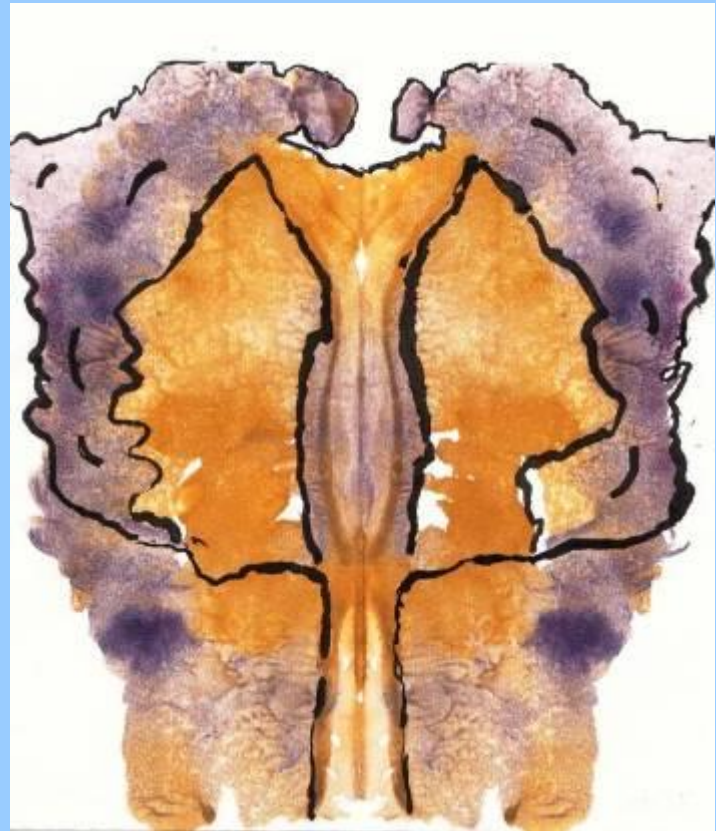


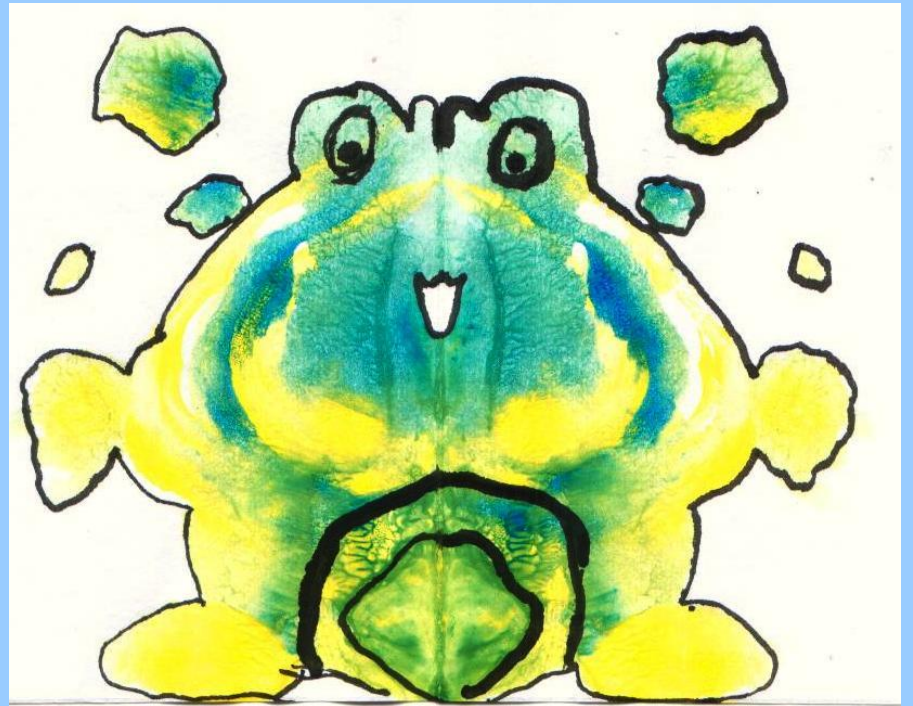
















RISBO OBREŽEMO, KAKOR NAM NAREKUJEJO
OBLIKE, NALEPIMO NA BARVNI PAPIR IN
UPORABIMO KOT VOŠČILNICO, ČESTITKO.....

